



ADVISING FAMILIES ACROSS GENERATIONS

STEP CANADA PRESENTS ITS 2018 -19 BOARD OF DIRECTORS

The Society of Trust and Estate Practitioners (STEP) is committed to raising the public profile of professionals working in the trust and estate field. STEP members must meet rigorous educational standards and engage in continuing professional development to hold the trust and estate practitioner (TEP) designation. Currently, there are 1,877 TEPs in Canada, and another 682 professionals who are enrolled in STEP's domestic education program working toward their TEP designation. Worldwide, STEP has 20,000 members in 95 countries.

STEP's members work with families and family businesses, helping them with estate and succession planning, both domestically and internationally, while protecting the interests of their spouses, children, and elderly or vulnerable relatives. Today, many families are spread across the globe. Estate plans must therefore comply with the tax and succession laws of various jurisdictions to ensure that estates and family businesses pass safely from one generation to the next.

STEP's national board and committees assume a leading role in communicating the views of STEP's members to governments, tax authorities, regulators, and the public. All over the world, STEP works with governments and regulatory authorities to examine the probable effects of proposed changes in the law, provide technical advice and support, and respond to requests for consultations.

www.step.ca



Pamela Cross,
CPA, CA, TEP

National Chair,
KPMG LLP,
Halifax



Pamela Cross,
LLB, TEP

National Deputy Chair,
Borden Ladner Gervais LLP,
Ottawa



Chris Ireland
CPA, CA, TEP

National Deputy Chair,
PPI Advisory,
Vancouver



**Christine Van
Cauwenberghe**
CFP, LLB, TEP

National Treasurer,
Investors Group,
Winnipeg



**Rachel
Blumenfeld**
LLP, TEP

National Secretary,
Aird & Berlis LLP,
Toronto



Timothy Grieve
LLB, TEP

National Past Chair,
Merovitz Potechin LLP,
Ottawa



Brian Cohen
LLB, TEP

Director at Large,
Gowling WLG LLP,
Toronto



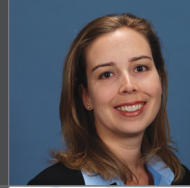
Aileen La Borie
LLB, TEP

Director at Large,
RBC Wealth Management,
Vancouver



Richard Niedermayer
LLB, TEP

Director at Large,
Stewart McKelvey,
Halifax



Litza Anderson
LLB, TEP

Vancouver Branch Chair,
Scotia Wealth Management



Sangita Bhalla
LLB, TEP

Winnipeg Branch Chair,
RBC Wealth Management



**Sarah Anderson
Dykema**
LLB, TEP

Atlantic Branch Chair,
McInnes Cooper



Kathy Hawkesworth
LLB, TEP

Edmonton Branch Chair,
Edmonton Community
Foundation



Vance LeCocq
CPA, CA, TEP

Calgary Branch Chair,
Innovative Capital
Protection



Nathalie Marchand
LLB, TEP

Montreal Branch Chair,
Miller Thomson LLP



Jean McDonell
CPA, CGA, TEP

Ottawa Branch Chair,
Ginsberg Gluzman
Fage & Levitz LLP



Edward Polci
CLU, TEP

Toronto Branch Chair,
First York Insurance

